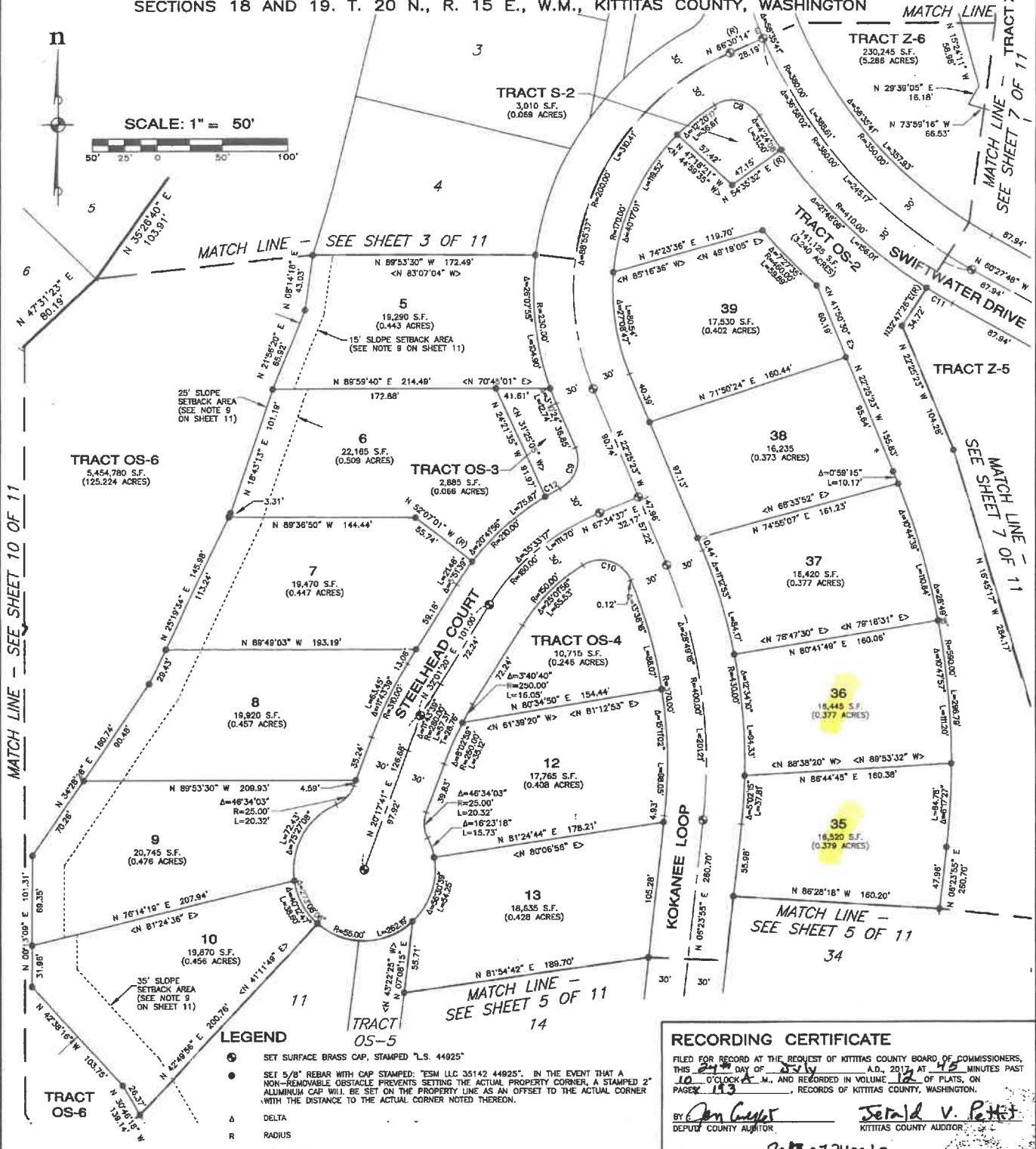


# RIVER RIDGE SUNCADIA - PHASE 2 DIVISION 3

A PORTION OF SECTION 13, T. 20 N., R. 14 E., W.M. AND OF SECTIONS 18 AND 19, T. 20 N., R. 15 E., W.M., KITTITAS COUNTY, WASHINGTON

07/24/2017 10:45:11 AM V: 12 P: 183 201707240010  
8:00 AM RUCR010  
Kittitas County Auditor Page 4 of 11



CURVE TABLE			
CURVE	DELTA	RADIUS	LENGTH
C8	91°38'58"	25.00	39.99
C9	84°25'32"	25.00	36.84
C10	100°31'21"	25.00	43.86
C11	03°15'14"	410.00	23.28
C12	03°25'14"	210.00	12.54

### LEGEND

- SET SURFACE BRASS CAP, STAMPED "L.S. 44925"
- SET 5/8" REBAR WITH CAP STAMPED: "ESM LLC 35142 44825". IN THE EVENT THAT A NON-REMOVABLE OBSTACLE PREVENTS SETTING THE ACTUAL PROPERTY CORNER, A STAMPED 2" ALUMINUM CAP WILL BE SET ON THE PROPERTY LINE AS AN OFFSET TO THE ACTUAL CORNER WITH THE DISTANCE TO THE ACTUAL CORNER NOTED THEREON.
- Δ DELTA
- R RADIUS
- L ARC LENGTH
- (R) RADIAL BEARING
- < > RADIAL BEARING AT LOT CORNER
- OS-1 OPEN SPACE TRACT - DESIGNATION NUMBER
- S-1 SERVICE TRACT - DESIGNATION NUMBER
- Z-1 FUTURE DEVELOPMENT - DESIGNATION NUMBER



**RECORDING CERTIFICATE**  
FILED FOR RECORD AT THE REQUEST OF KITTITAS COUNTY BOARD OF COMMISSIONERS, THIS 24th DAY OF July, A.D. 2017, AT 10:45 MINUTES PAST 10 O'CLOCK A.M., AND RECORDED IN VOLUME 12 OF PLATS, ON PAGE 113, RECORDS OF KITTITAS COUNTY, WASHINGTON.  
BY Jan Geyer Jerald V. Peltz  
DEPUTY COUNTY AUDITOR KITTITAS COUNTY AUDITOR  
AUDITOR'S REFERENCE: 2017 07240010

**ESM CONSULTING ENGINEERS, LLC**  
33400 8th Ave. S, #205  
Federal Way, WA 98003  
www.esmcivil.com  
Civil Engineering | Land Surveying | Land Planning  
Public Works | Project Management | Landscape Architecture  
DATE: 2017-07-08 JOB NO. 998-754-016-0003  
DRAWN BY: C.A.F./R.F.G. SHEET 4 OF 11